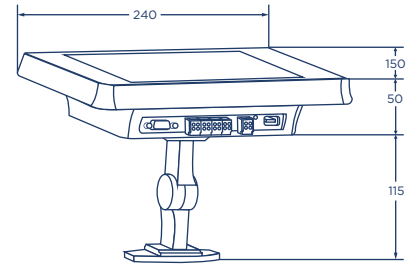
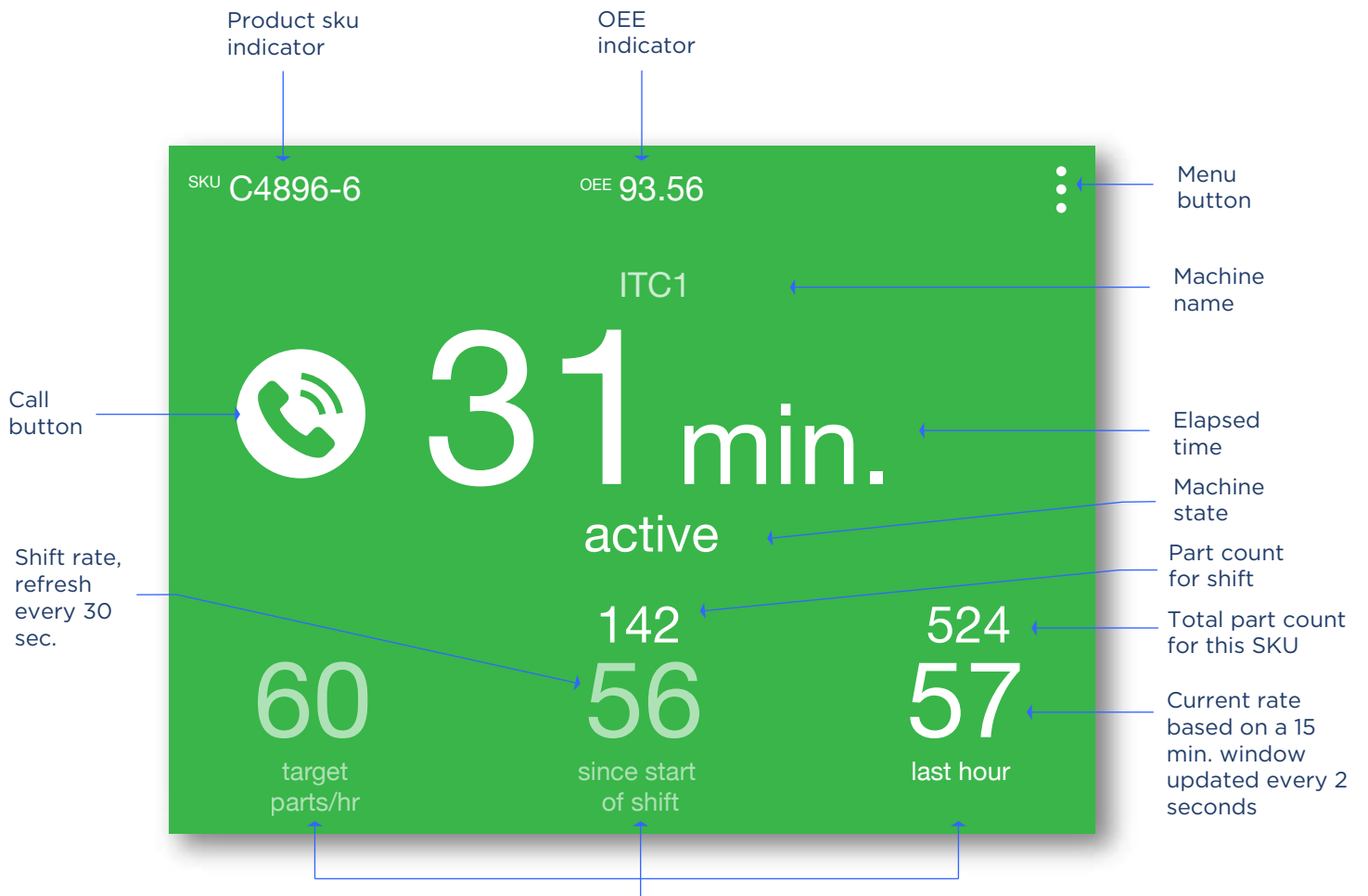


# RAVEN Raven Hublet Support

Raven Hublet is a tablet-like device that is used to connect an operator to their machine and/or process. The purpose of the hublet is to capture the reasons for downtime in the process and alert others to issues in real time. Downtime is captured through the process of tagging where an operator provides the hublet with a reason for downtime.



Raven Display and support (mm)



This bottom zone will accommodate the various indicators that will relay performance to the operator. Actual terms and quantity of indicators will vary with specific installations.

## Getting Started

Raven Hublet is a tablet-like device that is used to connect an operator to their machine and/or process. The purpose of the hublet is to capture the reasons for downtime in the process and alert others to issues in real time. Downtime is captured through the process of tagging where an operator provides the hublet with a reason for downtime.

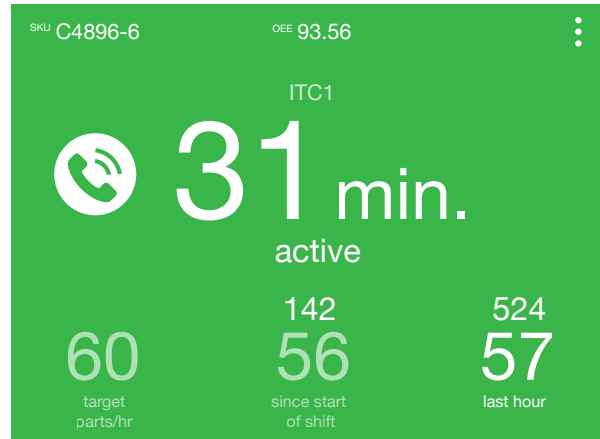
### Hublet Display Color Codes:

The Hublet uses color on its main display to provide visual cues to the operator.

#### Green -

Running at a good rate (active)

The green color represents a condition of normal operation. The hublet should always be green as it shows that there are no blockers and the process is performing as planned.



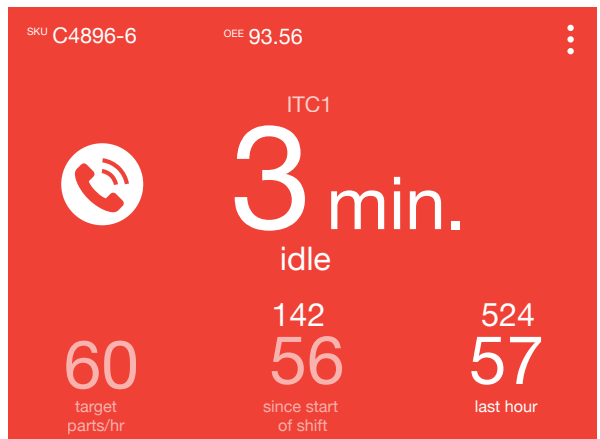
#### Red -

User input is required.

Red indicates below-rate or idle state.

When red, the operator should tag why the machine is down or running below-rate.

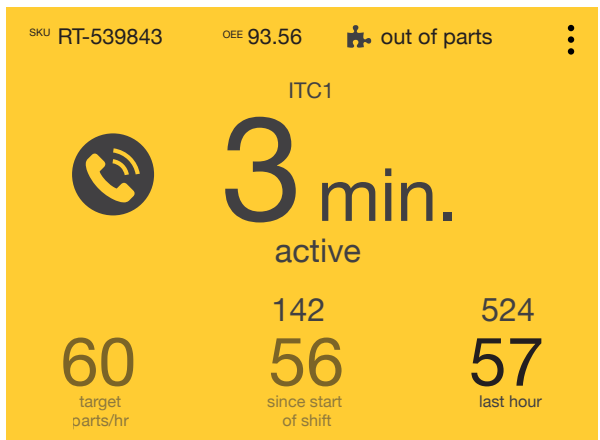
Tagging will cause the hublet display to change from red to yellow.



#### Yellow-

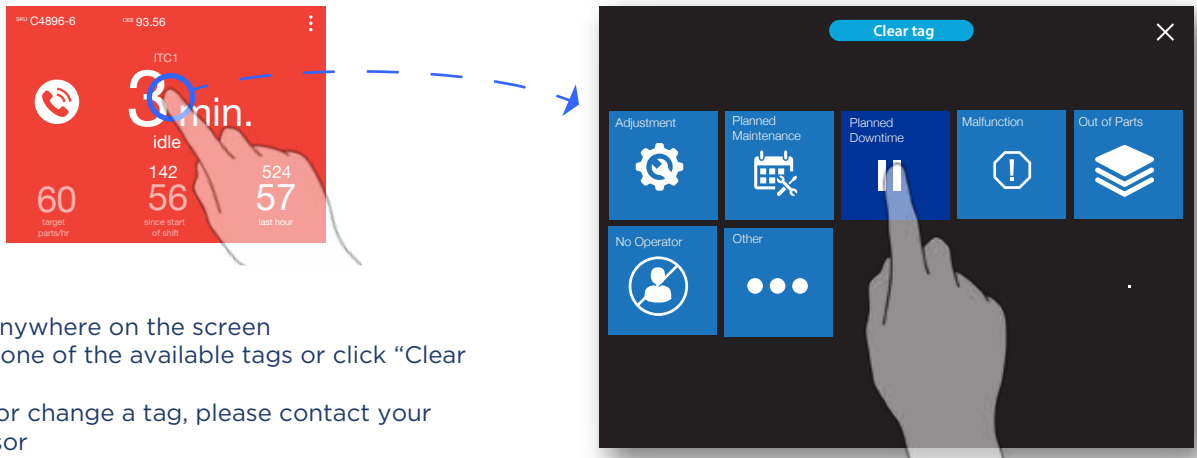
Yellow indicates below-rate or idle state that has been tagged.

The applied tag is shown in the upper right corner of the hublet display.



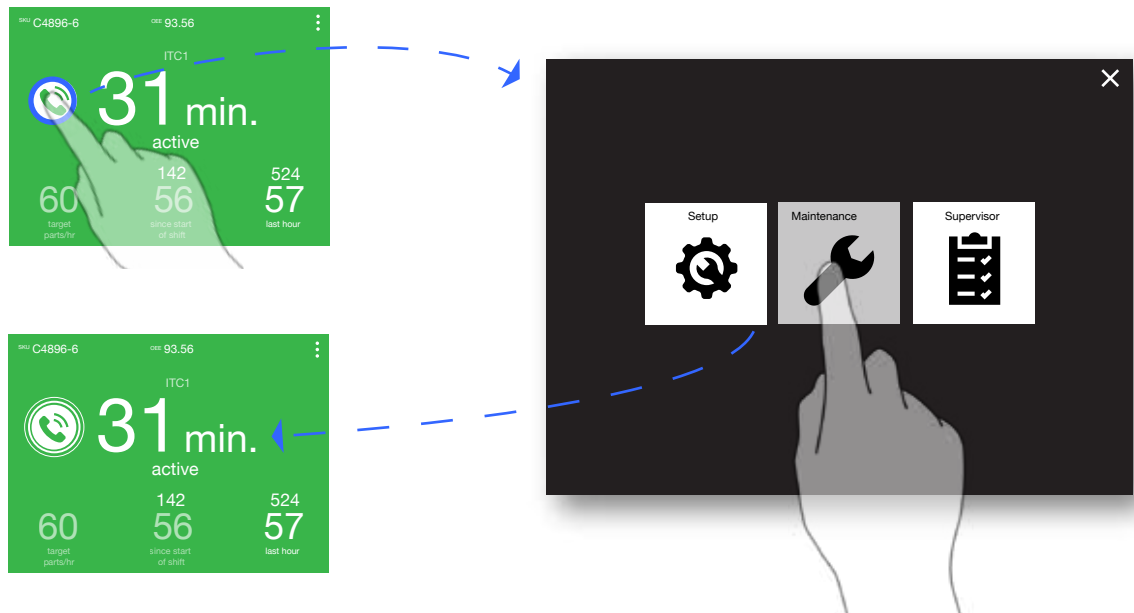
## How To Tag:

Tagging is the process by which anyone can capture information about the machine or process during uptime or downtime. Tags are set based on a conversation with plant management and are customized to best characterize most operational blockers. Tagging documents the barriers to optimal productivity and efficiency. By uncovering these barriers, Raven can identify opportunities for performance improvements. Tagging allows Raven to learn and recommend actions to improve the process.



## Escalation:

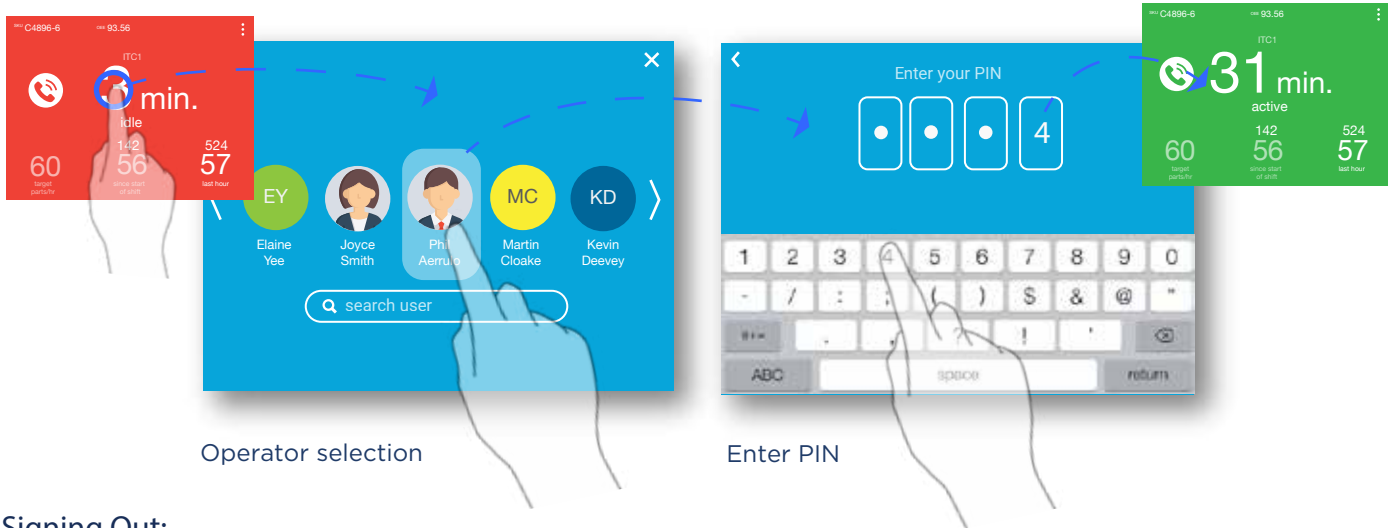
This feature allows for quick response to any issue. The contacts chosen are based on a pre-determined list from plant management. Choosing one of the options will notify the contact by text and/or email so they can assist immediately.



## Optional Features

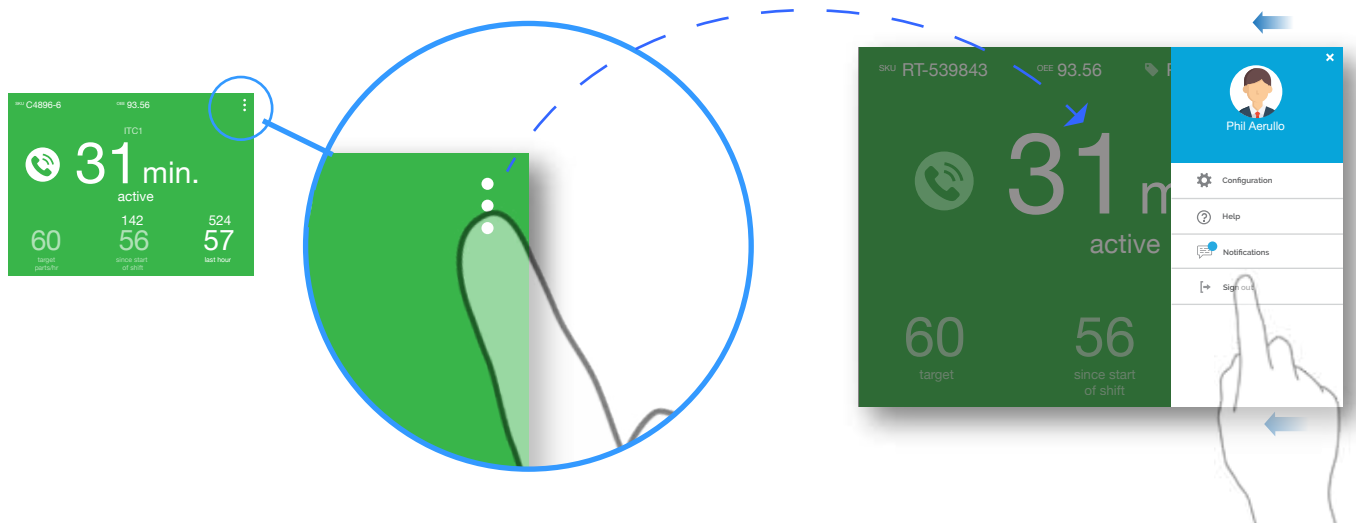
### Signing In:

To sign in, tap anywhere on the screen.  
Choose the appropriate operator and enter your PIN on the following page.  
You will be returned to the main screen.



### Signing Out:

To sign out, press the "kabob" icon.  
In the slide out panel, choose the "Sign Out" option.



### "Sleep" tags:

"Scheduled- no production" tags do not require an operator to sign in, and can be accessed by clicking the "skip" button on the sign in screen.

